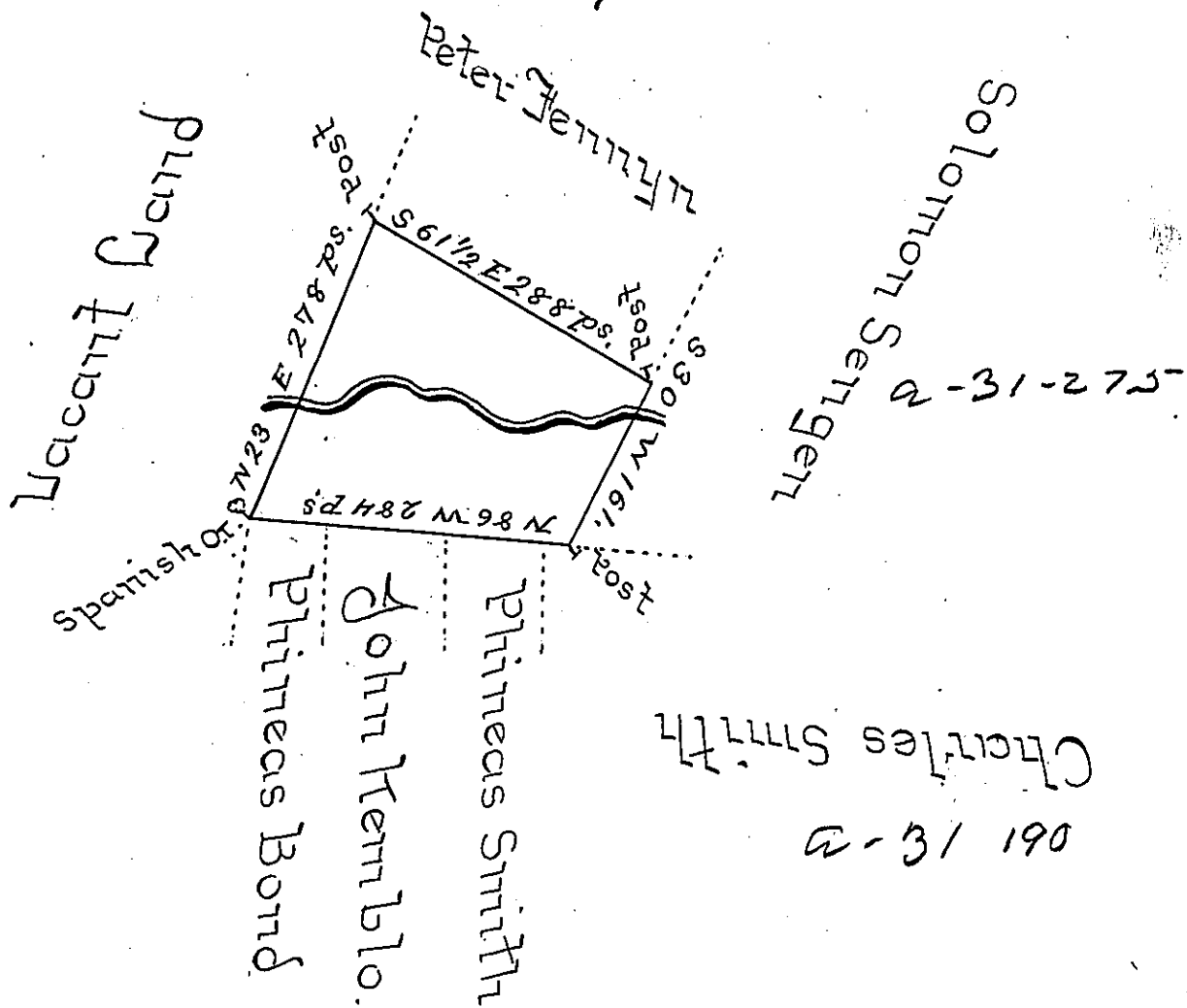


pg-150-



A Draught of a Tract of Land situate on the Waters of the Middle or Beaver Dam Branch of Frankstown Creek in the County of Cumberland, containing three hundred and fifty four acres and a quarter and the usual allowance of six acres P^C for Roads &c^a Surveyed for William Forsyth in pursuance of an order dated the 1st day of August 1766. No 402

To John Lutens Esq^r
Surveyor General.

P Richard Mea
Dep^y. Survey^r

IN TESTIMONY that the above is a copy of the original remaining on file in the Department of Internal Affairs of Pennsylvania, made conformably to an Act of Assembly approved the 16th day of February, 1833, I have hereunto set my Hand and caused the Seal of said Department to be affixed at Harrisburg, this—fourth—day of—July—1899.—

James W. Latta
Secretary of Internal Affairs.

